

SIDES Metres	ANGLES OF DIRECTION	CO-ORDINATES Y System 1019' X	
		CONSTANTS	
AB	30, 31	284 58 40	A
BC	20, 02	83 36 20	B
CD	22, 00	61 25 50	C
DE	22, 00	40 15 40	D
EF	211, 19	29 38 40	E
FG	20, 03	44 44 10	F
GH	20, 12	63 07 00	G
HJ	19, 89	76 37 40	H
JK	19, 90	95 46 00	J
KL	28, 20	111 11 10	K
LM	20, 29	138 02 10	L
MN	17, 73	95 49 30	M
NP	41, 29	228 26 10	N
PQ	20, 12	8 20 10	P
QR	14, 72	313 32 30	Q
RS	20, 00	297 01 30	R
ST	20, 00	277 37 00	S
TU	20, 00	258 10 20	T
UV	20, 00	238 46 00	U
VW	19, 99	219 21 30	V
WX	213, 88	209 38 40	W
XA	31, 73	234 39 40	X
		2N17 ⊕	+48 107, 59
		10016 ⊕	+47 567, 86
			+62 922, 97
			+62 475, 51

S.G. No.

1875/95

Approved

*[Signature]*

for Surveyor General

1995-04-24

This diagram  
comprises 2 sheets.  
Sheet No. 1

Beacons:

N ..... 12mm drill hole, top wall.

P ..... 12mm drill hole in concrete.

All other beacons are 12mm round iron pegs.

The figure A B C D E F G H J K L M N P Q R S T U V W X

Remainder 23  
a servitude road over Erf 65328 Cape Town

situate at Kenilworth in the Transitional Metropolitan Substructure of Cape Town

Administrative District of Cape

Province of Cape of Good Hope

Surveyed February 1995

by L.C Rodrigues (PLS0927)

*[Signature]*

Professional Land Surveyor

This diagram is annexed to  
No. K. 1265/95  
dated i.f.o.

The original diagram is  
No. 3137/1882  
annexed to Transfer/Grant  
C.F.18.1 dated 18/12/1882  
No. February 1995

File No. BHSX-3463 (M1426)  
S.R. No. 621/95  
Comp. BHSX-3463 (M1426)

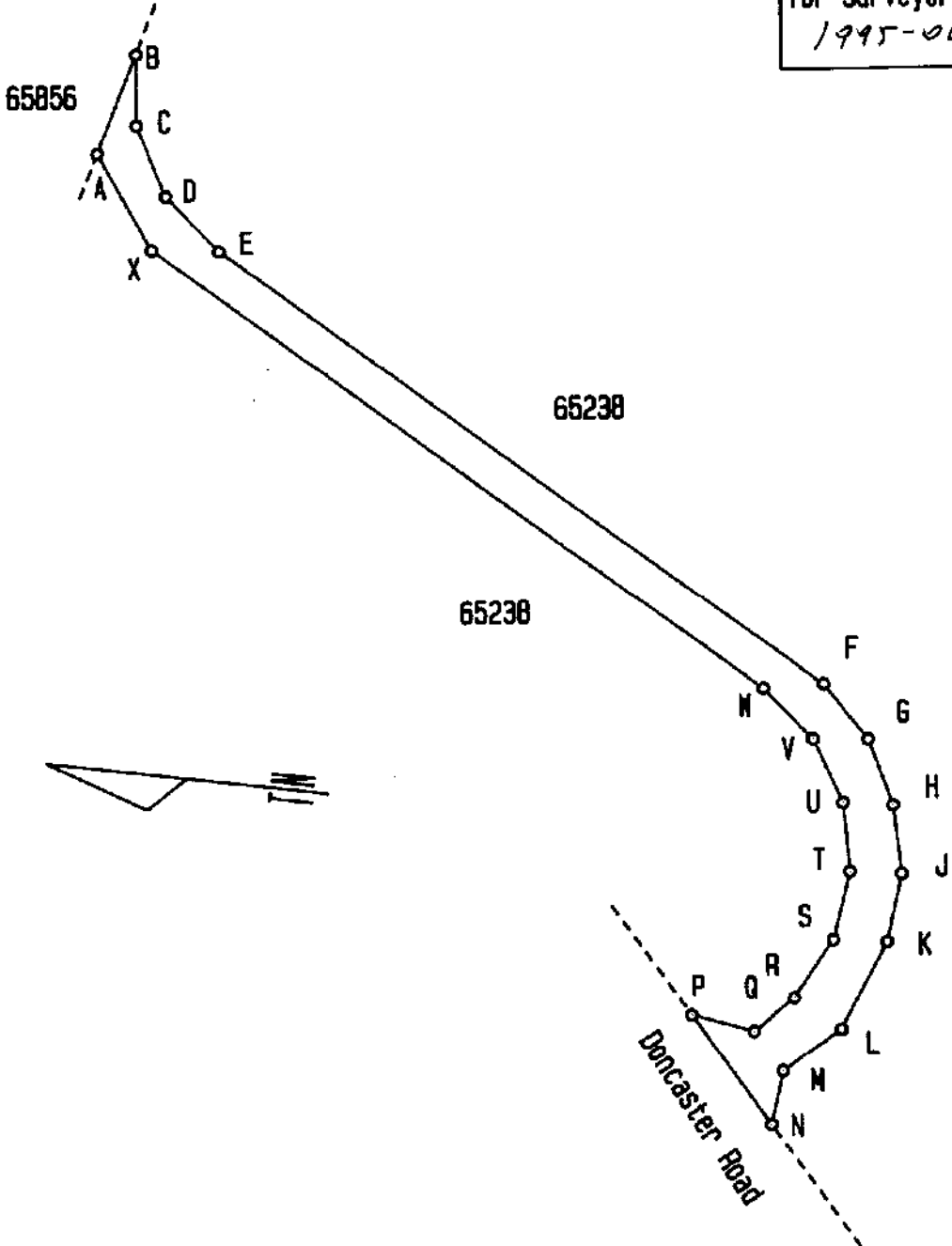
Registrar of Deeds

Gen. Plan 3137/1882

This diagram comprises 2 sheets.  
Sheet No. 2

S.G. No.  
**1875/95**  
Approved  
*Murray*  
for Surveyor General  
1995-04-24

Remainder 23  
a servitude road over Erf 65238 Cape Town



Scale 1:2000

Surveyed February 1995  
by L.C Rodrigues (PLS0927)

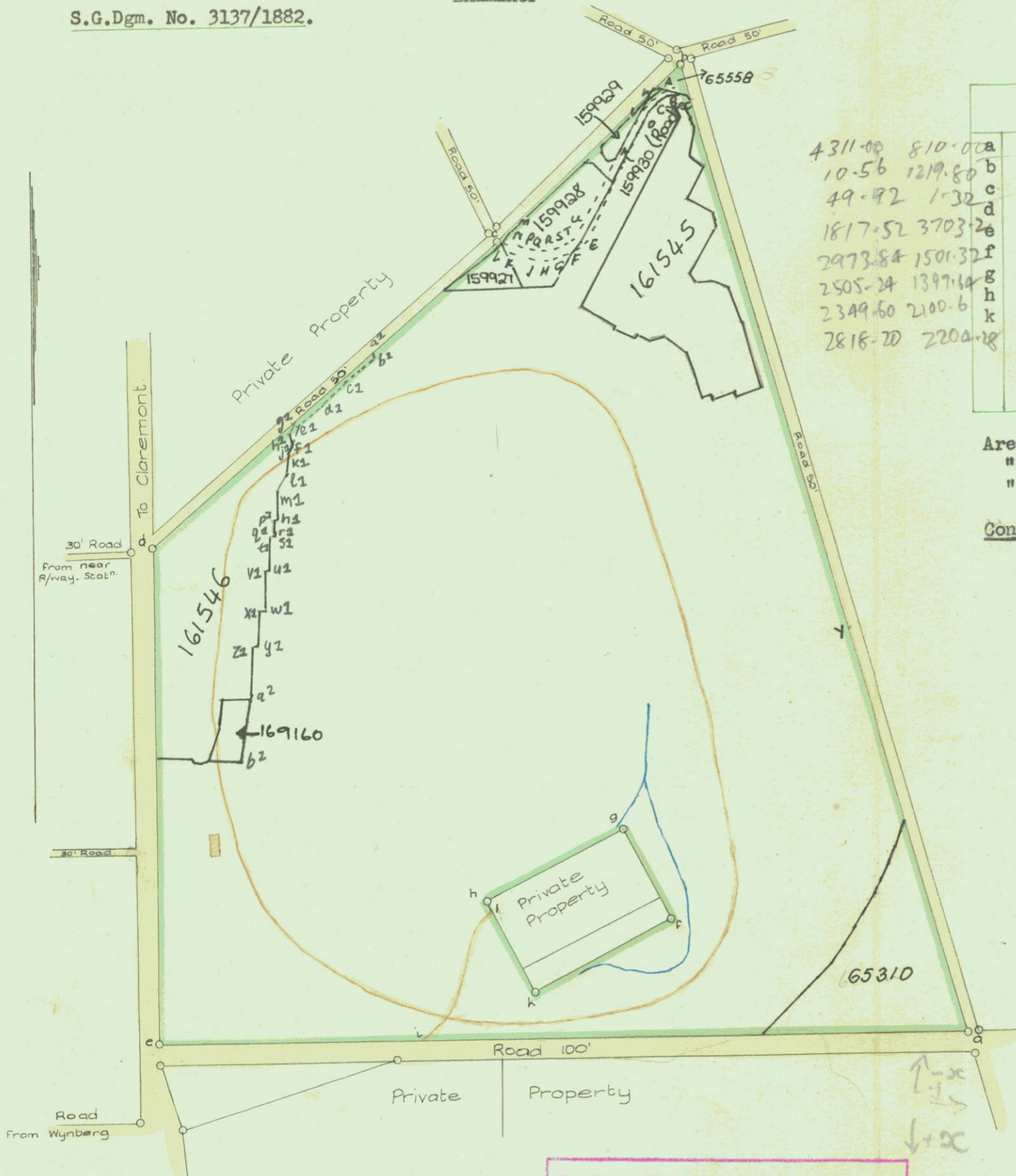
*Rodrigues*  
Professional Land Surveyor

The numerical data of this diagram are sufficiently consistent.

(Sgd.) Max Jurisch  
Examiner

S. G. Dgm. No. 3137/1882

S.G.Dgm. No. 3137/1882.



21 = ab - 1503,30M  
= 1503,30M  
21 = 71585,7102

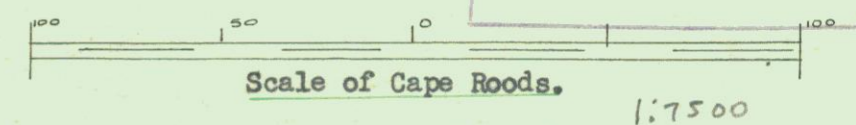
4311.00 810.00  
10.56 1219.80  
49.92 1.32  
1817.52 3703.2  
2973.84 1501.32  
2505.24 1397.64  
2349.60 2100.6  
2818.20 2204.28

Co-ordinates		Sides		Angles	
a	- 359.25 + 67.50	ab	397.88	a	74.24.10
b	+ 0.88 - 101.65	bc	101.67	b	62.0.0
c	- 4.16 - 0.11	cd	180.95	c	182.50.30
d	- 4.16 + 180.84	de	194.99	d	130.56.10
e	- 151.46 + 308.60	ea	318.28	e	89.49.10
f	- 247.82 + 125.11	fg	40.00	f	270.0.0
g	- 208.77 + 116.47	gh	60.00	g	270.0.0
h	- 195.80 + 175.05	hk	40.00	h	270.0.0
k	- 234.85 + 183.69	kf	60.00	k	270.0.0
		fa	125.44	afk	129.49.10
		ke	150.19	fke	201.14.50
				kea	7.1.40
				eaf	21.54.20

Area of fig. a-e 135<sup>M</sup> - 15<sup>SR</sup>  
" " " f-k 4 - 0  
" on the ground 131 - 15

Condition. A road must be reserved to give access to the farm f - k.

ERF 65238 CAPE TOWN  
at Kenilworth



112,2271 ha

The above figure a - e surrounding the figure f.g.h.k. represents 131 Morgen 15 Square Rods of ground, situate in the Cape Division, Field Cornetcy of Newlands on the Claremont Flats.

Bounded North by a Road 50' wide  
East " Do. Do.  
South " Do. 100' wide  
West " Do. Do.

Framed from actual Survey,  
(Sgd.) Wm. de Smidt Junr.  
Gov. Land Surveyor.  
24 November 1882.

Note: The land f g h k is Quitrent granted 3rd January, 1815 to Moses Eyssen.

Copied from the diagram relating to  
Title Deed No. C. F. 18. 1.  
dated 18th December 1882 in favour of  
Chairman in Trust for Jockey Club  
W.G. Hardwick  
for SURVEYOR-GENERAL,  
CAPE TOWN.  
4.6.1951.

Road letters along Bdy. x.y  
closed. Vide T/C's Notice d.d. 1993-05-25  
File S. 19996/48 p. 72  
R.A.F.  
for SURVEYOR-GENERAL DATE 1993.07.09

Cape Town Sheet N 18.

Vol. 18. AH 18B  
V52 & V51

M 3160

M 1426

ERF 65238  
Comp. 253  
Ref. C6

FOR ENDORSEMENTS  
SEE BACK OF DIAGRAM

BS M.P.

S. G. Dgm, No. 3137/1882

Dem. 1875/95 Cancelled  
 SERVICE NO. 10000  
 VIDE S. 1925/87  
 12 SURVEYOR GENERAL  
 1977-05-10

SURVEY RECORD	DIAGRAM NO.	DESCRIPTION	DEED	INITIALED
E. 62/95	1875/95	The fig. ABCDEFGH KLMNOPQRSTUW repres. a Serv. Road	K. 1265/95	
E199/2005	4291/2005	1. The line a 2 b 2 c 2 d 2 e 2 f 2 represents the centre line of a stormwater servitude 3.00 metres wide 2. The line g 2 h 2 i 2 k 2 l 2 m 2 n 2 p 2 q 2 r 2 s 2 t 2 u 2 v 2 w 2 x 2 y 2 z 2 a 2 b 2 represents the western boundary of a services servitude 3.00 metres wide 3. The line j 2 k 2 represents the western boundary of a sewer servitude 3.00 metres wide		

SURVEY RECORD	DIAGRAM NO.	DESCRIPTION	DEED	INITIALED
E. 1416/78	5173/78	Erf 65310	4, 1893	14424/78
E. 687/76	2225/76	Erf 65558	1149	35069/76
E. 3462/77	8695/77	Erf 159127	3997	36888/78
"	8696/77	Erf 159128	15246	36888/78
"	8697/77	Erf 159129	1816	36888/78
E. 9442/79	9698/79	Erf 159130	1870	36876/78
E. 157/2000	1555/2000	" 161545	4, 8226	41890/00
"	1536/2000	" 161546	5, 6733	41891/00
E. 2000/2000	1395/2000	Erf 167160	4027	65271/05

65238  
252  
CC

65238