

Stormwater masterplan



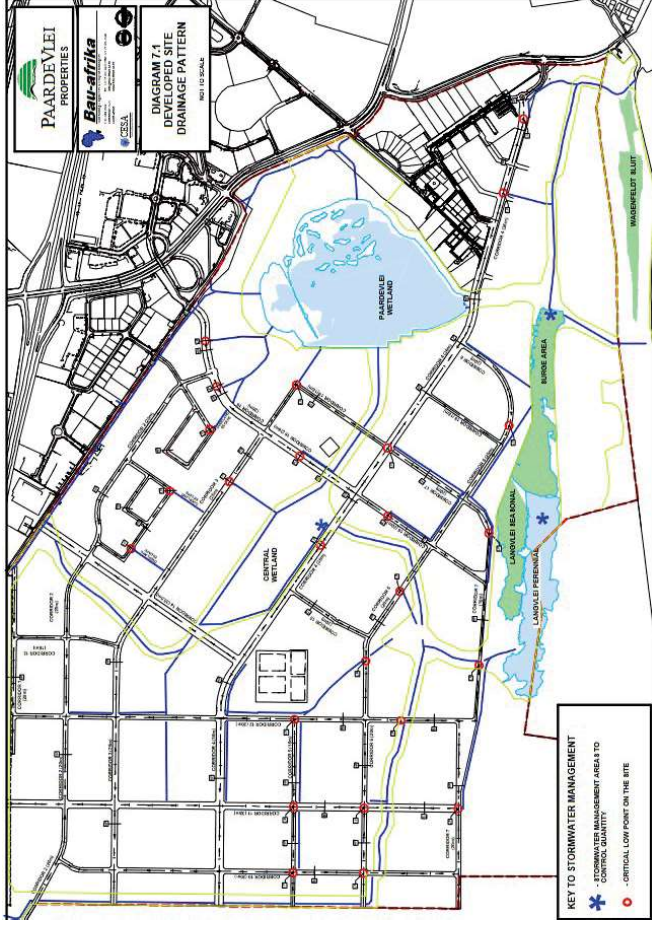
The City of Cape Town developed a stormwater master plan for the development of the Paardevlei macro site, which was prepared by Bau-Afrika (Pty) Ltd Consulting Engineers in 2014.

That study indicated that based on the City of Cape Town's Management of Urban Stormwater Impacts Policy the runoff quantity would need to be controlled to:

- Extend the detention of a 1:1 year RI storm over a 24-hour period to protect erosion of the downstream canals.
- Reduce the peak flows of a 1:10 year RI storm to its pre-development flow peaks to protect the downstream properties from frequent nuisance flooding.
- Reduce the peak flows of a 1:50 year RI storm to its pre-development flow peaks to protect the floodplain properties from extreme flooding conditions.
- Assess the effects of a 1:100 year RI storm on the proposed system, adjacent properties and downstream facilities.

The PV plant will follow this stormwater masterplan, as requested by the City. The PV plant does not produce any run-off and on the contrary it may also harvest some of that water to be used for the cleaning of the modules.

Stormwater masterplan



Planned drainage development



Stormwater management controls